

The VersaWorks logo features a large, stylized, black, cursive letter 'V' on the left. To its right, the word "VersaWorks" is written in a bold, black, sans-serif font.

## Installation Guide

---

Thank you very much for purchasing this product.

- To ensure correct and safe usage with a full understanding of this product's performance, please be sure to read through this manual completely.
- Unauthorized copying or transferal, in whole or in part, of this manual is prohibited.
- The specifications of this product and the contents of this operation manual are subject to change without notice.
- The operation manual and the product have been prepared and tested as much as possible. If you find any misprints or errors, please inform us.
- Roland DG Corporation assumes no responsibility for any direct or indirect loss or damage that may occur through use of this product, regardless of any failure to perform on the part of this product.
- Roland DG Corporation assumes no responsibility for any direct or indirect loss or damage that may occur with respect to any article made using this product.

---

Company names and product names are trademarks or registered trademarks of their respective holders.

R7-240111

Copyright © 2018-2024 Roland DG Corporation  
<http://www.rolanddg.com/>

FA03709

# Contents

Introduction .....	2
What Is VersaWorks? .....	3
About the User's Manuals .....	4
Copyrights and Registered Trademarks .....	5
Installation and Settings .....	6
Installing VersaWorks .....	7
System Requirements .....	7
Downloading and Installing .....	8
Before Connecting the Printer .....	10
Connecting the Printer .....	12
Making the Settings for Roland@NET .....	17
Setting Up the Client .....	19
Basic Operations .....	27
Starting VersaWorks .....	28
Starting Method .....	28
Saving VersaWorks Settings and Jobs for Later Use .....	29
Saving Backup Data .....	29
Loading Backup Data .....	30
Deleting VersaWorks .....	31
Deletion Method .....	31

# Introduction

---

What Is VersaWorks?.....	3
About the User's Manuals.....	4
Copyrights and Registered Trademarks.....	5

# What Is VersaWorks?

---

VersaWorks is an advanced software RIP that provides the user with the following advantages.

- It has an easy-to-use user interface that consists of simple operations.
- It has a cutting function and also supports printing and cutting machines. It enables a wide variety of applications that combine printing and cutting.
- It supports the printing of spot colors. It converts the colors registered in spot color libraries into process colors for printing. In addition to the spot color library that is registered as standard, new libraries can also be created.
- It is standard-equipped with various output functions designed to improve productivity (such as tiled output and an automatic nesting function).
- It can use Roland@NET to automatically update the software.
- You can connect up to four printers to a single computer.
- It can be used to add cutting lines or spot color plates to or configure the layer settings for printing data (via the Job Assistant function).

# About the User's Manuals

The following user's manuals are included with the software.

- **Installation guide (this manual: electronic-format manual)**  
This manual explains how to install VersaWorks.
- **VersaWorks help (electronic-format manual)**  
The operation method of VersaWorks is written in this manual.

## Viewing the Help from the Website

You can view and download the electronic-format manuals from the following URL or QR code.

\* You can also view and download the paper manuals.

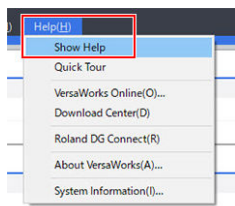
\* You can also view this website from a smartphone.



<https://downloadcenter.rolanddg.com/VersaWorks6>

## Viewing the Help from the Software

From the [Help] menu, click [Show Help].



## Viewing the Help from the Windows Menu

- Windows 11
  1. Click [Start]>[All Apps].
  2. From the list of apps (programs), click [VersaWorks]>[VersaWorks Help].
- Windows 10
  1. Click [Start].
  2. From the list of apps (programs), click [VersaWorks]>[VersaWorks Help].

# Copyrights and Registered Trademarks

Copyrights and property of this software and this manual belong to Roland DG Corporation. No part of this software or publication may be reproduced, stored in a retrieval system, or transmitted—in any form or by any means, electronic, mechanical, photocopy, recording, or otherwise—without the prior written permission of the publisher.

PANTONE Colors displayed in the software application or in the user documentation may not match PANTONE-identified standards. ® Consult current PANTONE Color Publications for accurate color. PANTONE and other Pantone trademarks are the property of Pantone LLC. ® ©Pantone LLC, 2016.

Pantone is the copyright owner of color data and/or software licensed to Roland DG Corporation to distribute for use only in combination with VersaWorks. PANTONE color data and/or software shall not be copied onto another disk or into memory unless as part of the environment for the execution of VersaWorks.



Other company names and product names are trademarks or registered trademarks of their respective holders.

# Installation and Settings

---

Installing VersaWorks.....	7
System Requirements.....	7
Downloading and Installing.....	8
Before Connecting the Printer.....	10
Connecting the Printer.....	12
Making the Settings for Roland@NET.....	17
Setting Up the Client.....	19

# Installing VersaWorks

## System Requirements

Operating system (OS)	Windows 11/10 (64-bit edition)* <sup>1</sup>
CPU	2.0 GHz or faster Intel Core 2 Duo recommended
Memory	2 GB or more recommended
Video card and monitor	A resolution of 1,280 x 1,024 or more
Free hard-disk space required for work	40 GB or more recommended
Hard disk file system	NTFS format
Other requirements	<ul style="list-style-type: none"><li>• Ethernet port*<sup>2</sup></li><li>• USB port*<sup>2</sup></li><li>• To use Roland@NET: Internet connection and web browser</li></ul>

\*1 The application cannot be installed if the number of bits differ between Windows and the application.

\*2 A port that matches the interface of the model you are using is required.



## Downloading and Installing

### 1. Download the software.

#### Procedure

1. Log on to Windows with an account with "Administrators" rights.  
Shut down all other programs.

#### MEMO

Only the account with "Administrators" rights that was used to install this software can use it.

2. Access the download website (<https://downloadcenter.rolanddg.com/VersaWorks6#software>).
3. Click [VersaWorks 6].
4. Click [Installer [202\*~\*\*~\*\*, Ver.\*~\*\*~\*]].
5. Download the software according to the on-screen instructions.

## 2. Installing the Software

### Procedure

1. Extract the .zip file, and then double-click the .exe file in the extracted folder.  
If you have downloaded the .exe file, double-click that one.

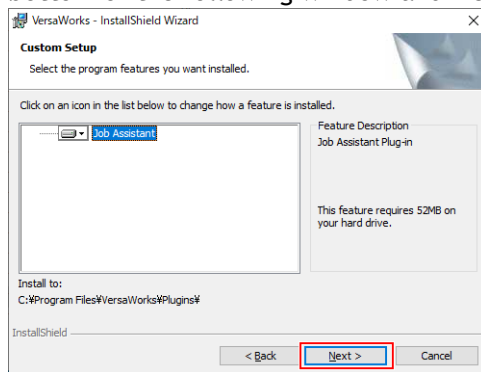
2. Install the software according to the on-screen instructions.

- **Checking the license agreement**

VersaWorks installs multiple pieces of software, so the license agreement must be checked multiple times.

- **Job Assistant**

Job Assistant is a VersaWorks expansion function that adds cutting lines or spot color plates to or configures the layer settings for printing data. We recommend that you click [**Next**] at the bottom of the following window and install this function.



### To users printing from Mac clients

Do not delete the folder [VW\_Installer] - [For Macintosh] that was created during the installation. The software uses the files in this folder.

## Before Connecting the Printer

Check to make sure that you're using the latest version of VersaWorks. If VersaWorks is not the latest version, it may not be possible to print from the connected printer.

- To perform this operation, connect the computer on which VersaWorks is installed to the Internet.
- If upgrading cannot be accomplished by following the steps described below, contact your authorized Roland DG Corporation dealer.

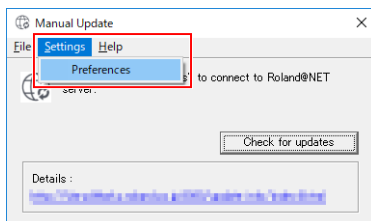
### Checking If VersaWorks Is the Latest Version

#### Procedure

**1. Display the window for updating the software.**

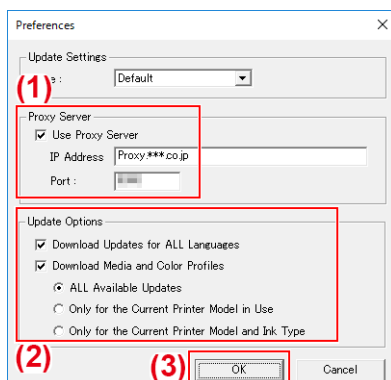
- Windows 11
  - a. Click [Start]>[All Apps].
  - b. From the list of apps (programs), click [VersaWorks]>[Online Update].
- Windows 10
  - a. Click [Start].
  - b. From the list of apps (programs), click [VersaWorks]>[Online Update].

**2. From the [Settings] menu, click [Preferences].**

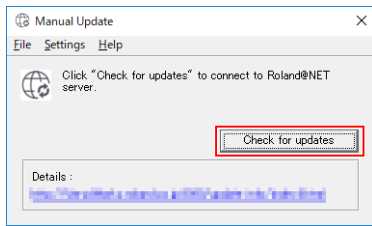


**3. Set the details for "Preferences."**

- (1) To use a proxy server, select the check box and type in the IP address and port number.
- (2) Select the two check boxes, and then select [ALL Available Updates].
- (3) Click [OK].



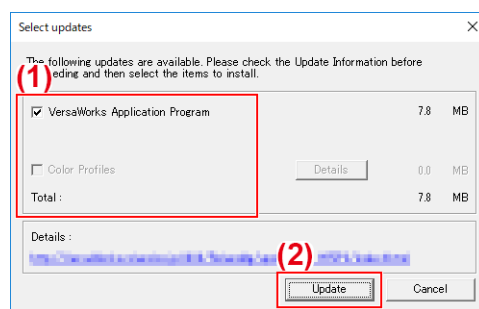
**4. Click [Check for updates].**



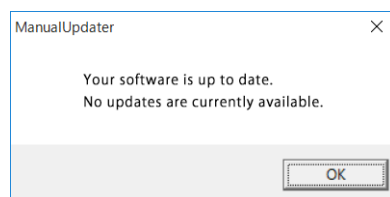
**5. Perform the operations shown below that correspond to the displayed window.**

- When the [Select updates] window appears
  - a. Select all the check boxes that can be selected.
  - b. Click [Update].

The update data is downloaded.



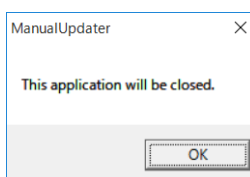
- When the following window appears



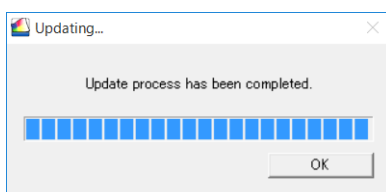
You're using the latest version of VersaWorks. Click [OK] and proceed to [Connecting the Printer\(P. 12\)](#).

**6. Click [OK].**

When the [User Account Control] window appears, click [Yes] (or [Allow]).



**7. Click [OK].**



This completes the update of VersaWorks to the latest version.

## Connecting the Printer

You can connect up to four printers to a single computer.

The connection method differs according to the printer model. Connect the devices according to the type of the connection port on the printer you're using.

### LAN Connection

This section explains how to use an Ethernet cable to connect the printer.

#### MEMO

The connection method is different on cutting machines. Connect these machines according to the following information.

- GR2-640/540: <https://downloadcenter.rolanddg.com/GR2-640>
- GS2-24: <https://downloadcenter.rolanddg.com/GS2-24>

### Procedure

1. On the printer, set the IP address and perform the other preparations required for connecting over Ethernet.

For information on how to set the IP address, refer to the instruction manual of the printer you're using.

2. Make sure the power to the printer is switched on.
3. Connect the printer and the computer (RIP server) to the same LAN.

4. Start VersaWorks.

- Windows 11
  - a. Click [Start]>[All Apps].
  - b. From the list of apps (programs), click [VersaWorks]>[VersaWorks].
- Windows 10
  - a. Click [Start].
  - b. From the list of apps (programs), click [VersaWorks]>[VersaWorks].

5. Set the printer to connect.

VersaWorks will search for the connectable printers and register them automatically. However, if the search finds zero printers or five or more printers, you will have to register printers manually.

- **When the detected number of printers is one to four**
  - a. Check the detected printer(s) and click [OK].
  - b. When the message [Do you want to install the virtual printer driver?] is displayed, click [Yes].
 

This message does not indicate the printer driver to use in communication. It indicates the virtual printer driver to use when printing directly from the application.
  - c. When the [User Account Control] window appears, click [Yes] (or [Allow]).
  - d. When the [Add Printer Wizard] window appears, click [Next].
 

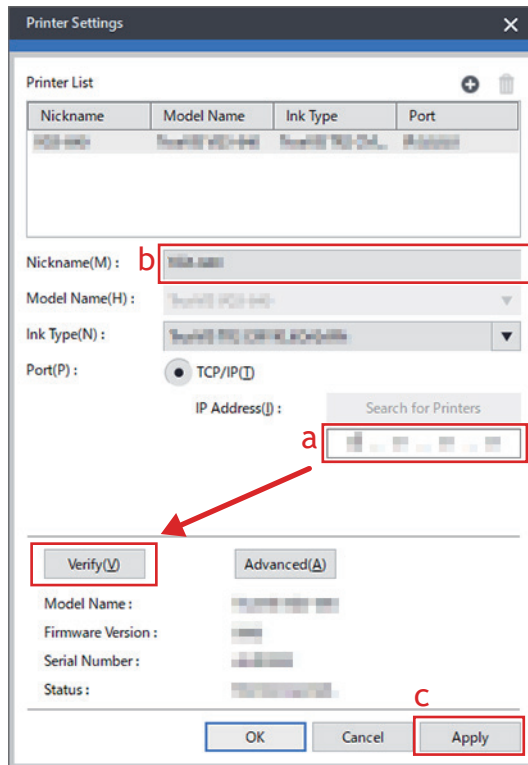
Registration is complete once the machine information is displayed in the top menu.
- **When no printers or five or more printers are detected**

- a. Enter the IP address of the printer and click **[Verify]**.  
Items such as the **[Model Name]** and **[Firmware Version]** are displayed.

**MEMO**

If the printer is not displayed, check the LAN cable connection status.

- b. Set the **[Nick Name]**.  
If you do not set a nickname, the model name is displayed.
- c. Click **[Apply]**.



- d. When the message **[Do you want to install the virtual printer driver?]** is displayed, click **[Yes]**.  
This message does not indicate the printer driver to use in communication. It indicates the virtual printer driver to use when printing directly from the application.
- e. When the **[User Account Control]** window appears, click **[Yes]** (or **[Allow]**).
- f. When the **[Add Printer Wizard]** window appears, click **[Next]**.  
The information of the connected printer appears in the **[Printer List]**.
- g. Click **[OK]**.  
Registration is complete once the machine information is displayed in the top menu.

This completes the preparations for performing output using VersaWorks.

To continue by connecting one or more additional printers, go on to [Connecting Multiple Printers\(P. 16\)](#).

## USB Connection

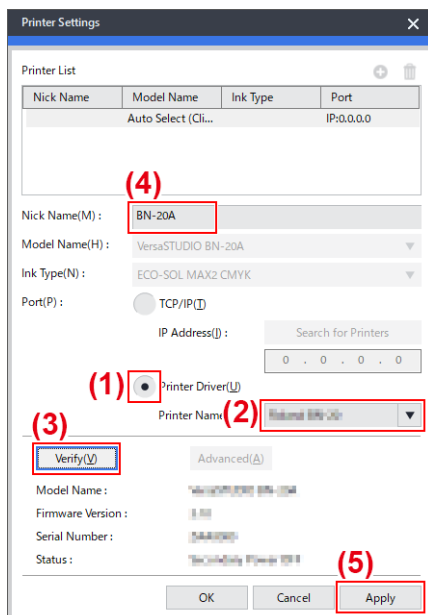
This is for a printer connected using a USB cable.

Please note that a USB connection requires a separate Windows-based driver, which is included with the printer.

### Procedure

1. Install the Windows-based driver for the printer you're using, and then connect the printer and the computer using a USB cable.  
For information on how to install the Windows-based driver, refer to the instruction manual for the printer you're using.
2. Make sure the power to the printer is switched on.
3. Start VersaWorks.
  - Windows 11
    - a. Click [Start]>[All Apps].
    - b. From the list of apps (programs), click [VersaWorks]>[VersaWorks].
  - Windows 10
    - a. Click [Start].
    - b. From the list of apps (programs), click [VersaWorks]>[VersaWorks].

The [Printer Settings] window appears. It appears only when the software starts for the first time.
4. Set the printer to connect.
  - (1) Select [Printer Driver].
  - (2) Select the printer to connect to from the [Printer Name] list.
  - (3) Click [Verify].  
Items such as the [Model Name], [Firmware Version], and [Serial Number] are displayed.
  - (4) Set the [Nick Name].  
If you do not set a nickname, the model name is displayed.
  - (5) Click [Apply].



- (6) When the message [Do you want to install the virtual printer driver?] is displayed, click [Yes].

This message does not indicate the printer driver to use in communication. It indicates the virtual printer driver to use when printing directly from the application.

- (7) When the [User Account Control] window appears, click [Yes] (or [Allow]).

- (8) When the [Add Printer Wizard] window appears, click [Next].

The information of the connected printer appears in the [Printer List].

- (9) Click [OK].

This completes the preparations for performing output using VersaWorks.

To continue by connecting one or more additional printers, go on to [Connecting Multiple Printers\(P. 16\)](#).



### Connecting Multiple Printers

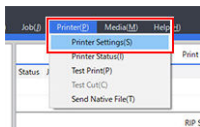
---

You can connect up to four\*1 printers.


This section assumes that the first printer has already been connected and explains how to connect the second and later printers.

#### Procedure

1. Check that the second printer is turned on, and then connect this printer to the computer.
2. From the menu bar, click [Printer]>[Printer Settings].



The [Printer Settings] window appears.

3. Set the printer to connect.
  - (1) Click .
  - (2) Set the printer to connect.

The way to set the printer differs depending on the printer model and on the type of the connection port.

    - LAN connection: Proceed to step 5.
    - USB connection: Proceed to step 4.
4. To add more printers, repeat steps 1 to 3.
5. When you're done making all the settings, click [OK].

This completes the preparations for performing output using VersaWorks.

---

\*1 The number of printers that you can connect differs depending on the model. Contact your authorized Roland DG Corporation dealer.

## Making the Settings for Roland@NET

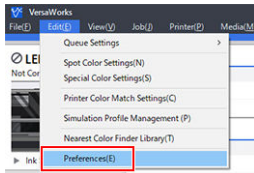
### What Is Roland@NET?

Roland@NET is a service that lets you obtain the software update information over the Internet. When VersaWorks is set to connect to Roland@NET, you are automatically notified when software updates become available. You can also download update data.

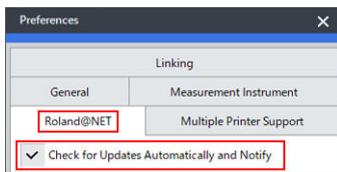
### Making the Settings for Roland@NET

#### Procedure

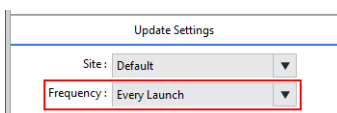
1. From the menu bar, click [Edit]>[Preferences].  
The [Preferences] window appears.



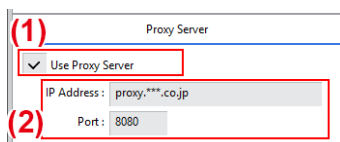
2. Click the [Roland@NET] tab.
3. Select the [Check for Updates Automatically and Notify] check box.



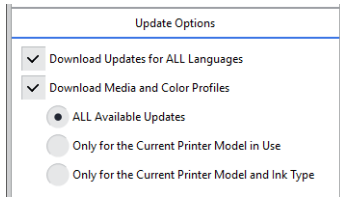
4. Select [Frequency] for [Update Settings].



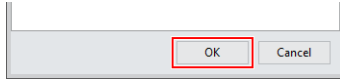
5. To use a proxy server, make the settings for the proxy server.
  - (1) Select the [Use Proxy Server] check box.
  - (2) Enter the [IP Address] and [Port].



6. Select [Update Options].  
Select what to download.



**7. When you're done making all the settings, click [OK].**



You are now done making the settings for Roland@NET.

## Setting Up the Client

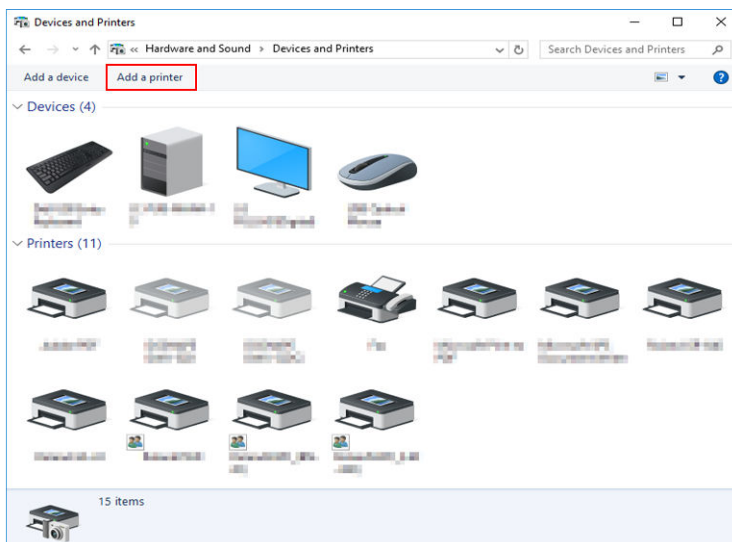
Computers used to create image files are called client computers. In contrast to this, the computer on which VersaWorks is installed and set up is called the raster image processor (RIP) server. Connecting the client to the RIP server over a network lets you send printing data from the client to the RIP server. In other words, you can use the RIP server as a printer for the client. You can also combine the RIP server and client on a single computer.

When the client and the RIP server are different computers, you need to install a printer driver on the client. Follow the steps below to install the printer driver.

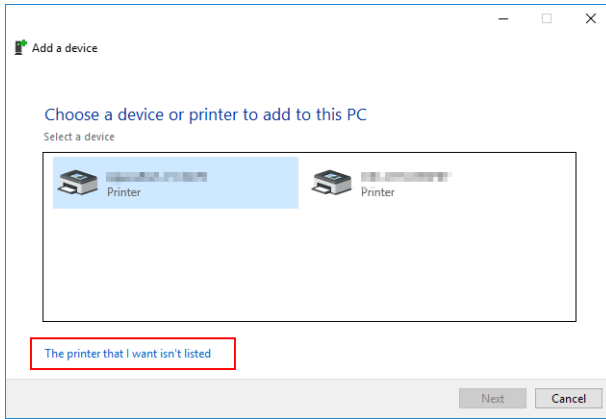
### Windows Client

#### Procedure

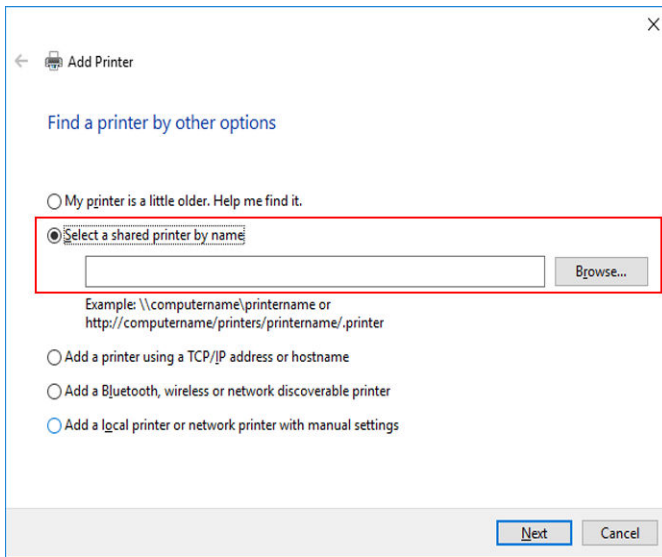
1. Make sure the RIP server is running, and then log on to an account with "Administrators" rights.
2. Display the [Devices and Printers] window.
  - Windows 11
    - a. Click [Start]>[All Apps]>[Windows Tools].
    - b. Double-click [Control Panel].
    - c. Click [View devices and printers].
  - Windows 10
    - a. Click [Start]>[Windows System]>[Control Panel].
    - b. Click [View devices and printers].
3. Click [Add a printer].



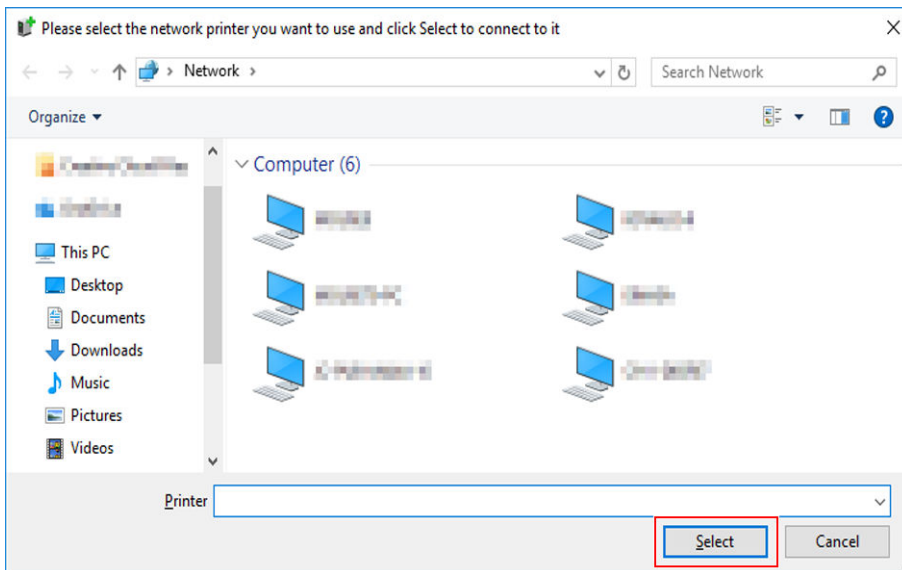
4. Click [The printer that I want isn't listed].



5. Select [Select a shared printer by name], and then click [Refer to].

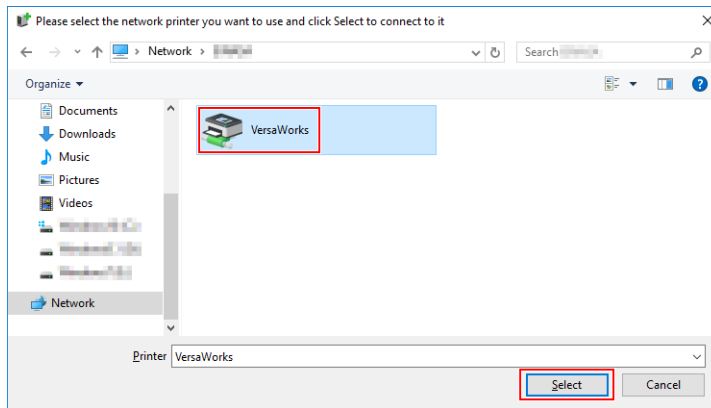


6. Select the RIP server computer, and then click [Select].

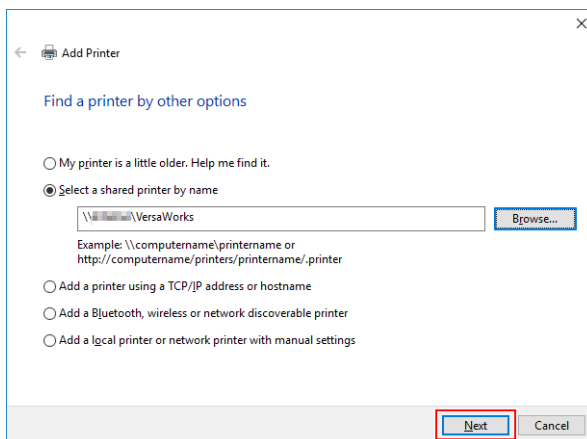


If you are prompted to enter a user name and password, enter the user name and password for the RIP server computer.

7. Select [VersaWorks] (or the nickname that has been set), and then click [Select].



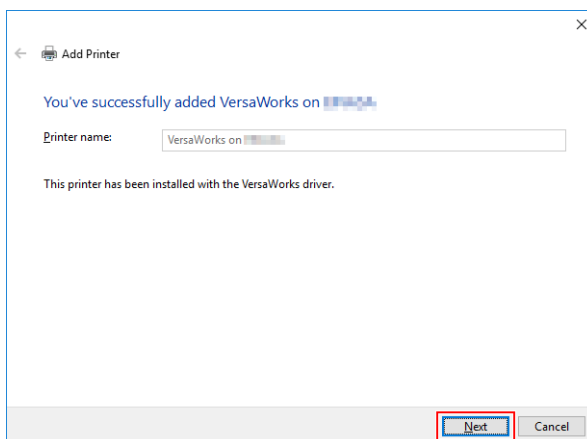
## 8. Click [Next].



When the window confirming that you trust the printer appears, click [Installing the Driver].

When the [User Account Control] window appears, click [Yes] (or [Allow]).

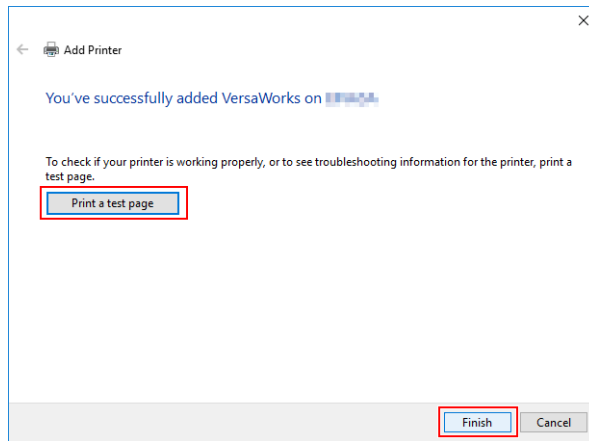
If the following window appears, the printer is added. Click [Next].



## 9. Click [Finish].

If you want to perform a printing test, click [Print a test page].

\* If the [Set as the default printer] check box is displayed, clear this check box according to your situation.



This completes the settings for the client. You can print from the program in the same way as with other printers.

## Mac Client

### Check this first

Before making the settings, check the following.

- The client is a Mac computer with macOS 10.13 or later for its OS.
- The user is logging on to the RIP server with an account that has administrator rights.
- The printer and the computers (RIP server and client) are connected correctly and are all switched on.
- The RIP server and client PC are connected to the same subnet.
- The printer settings are properly configured on the RIP server.
- The printer is ready to print.

### Setup method

If you register the RIP server as a network printer on the client, you can send data to the RIP server for it to print.

\* The screens shown in this explanation are for macOS 12.1.

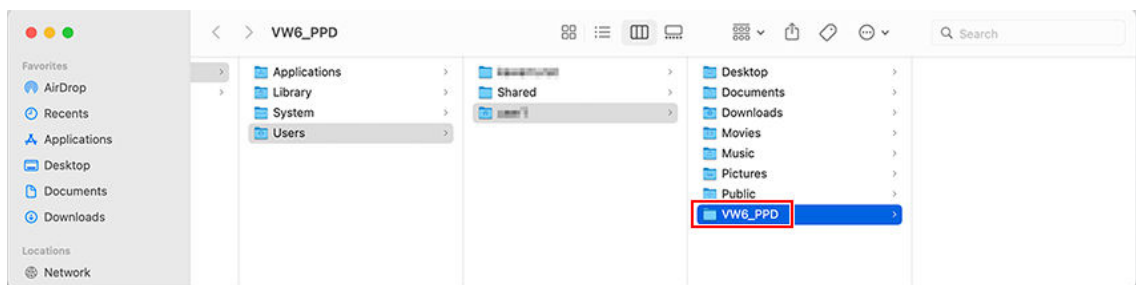
### Procedure

1. Follow the procedure below to save the PPD file on the client computer.
  - (1) Open the folder "VW\_Installer" that was created on the PC where VersaWorks has been installed.
  - (2) Copy the PPD file in the [For Macintosh] - [PPD File] - [OS10.13 or later] - [English] folder.
  - (3) Create the folder on the client PC.

#### IMPORTANT

Creating the folder in [Desktop], [Documents], or [Downloads] or on an externally connected disk will prevent the file from being recognized.

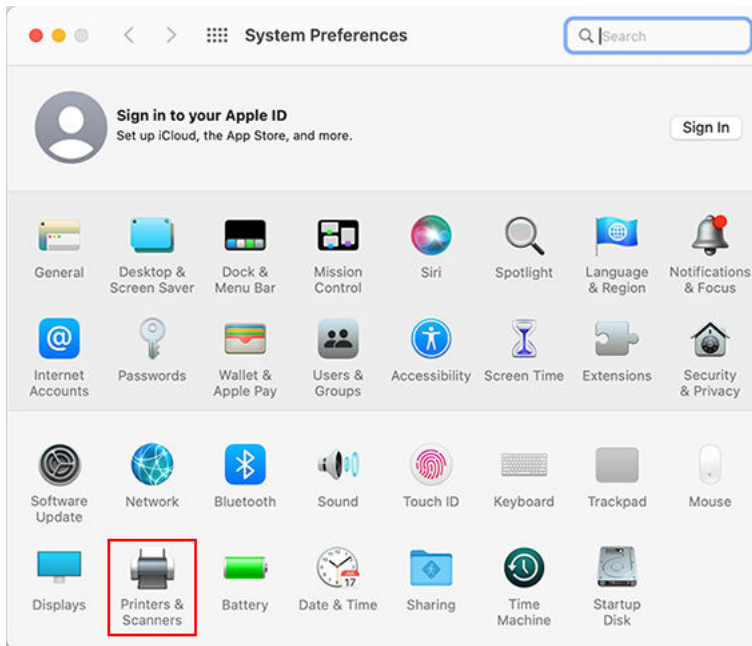
As an example, the folder VW6\_PPD is created directly underneath the name of the logged in account in the following figure.



- (4) Save the PPD file copied in step (2) in the folder created in step (3).

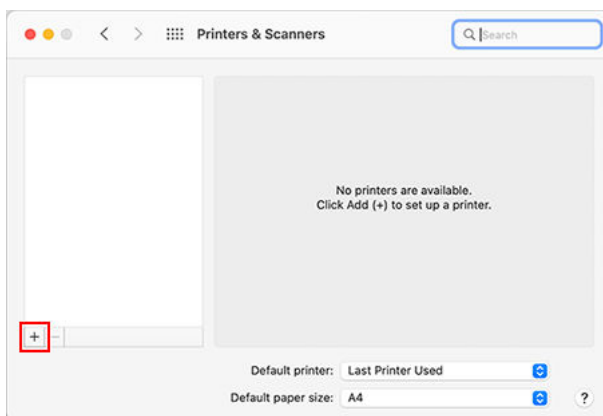
2. Click [System Preferences]>[Printers & Scanners].





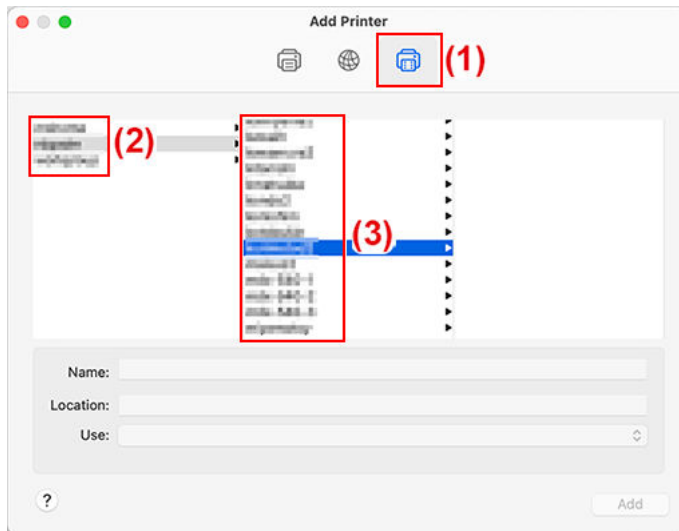
The [Printers & Scanners] window appears.

### 3. Click [+].



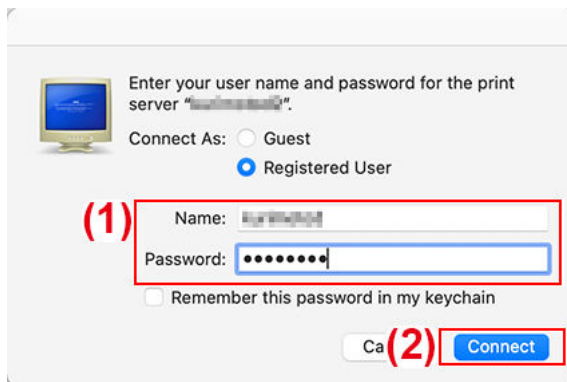
### 4. Select the RIP server to connect.

- (1) Select [Windows].
- (2) Select the network group to which the computer belongs.
- (3) Select the name of the RIP server's computer from the list.



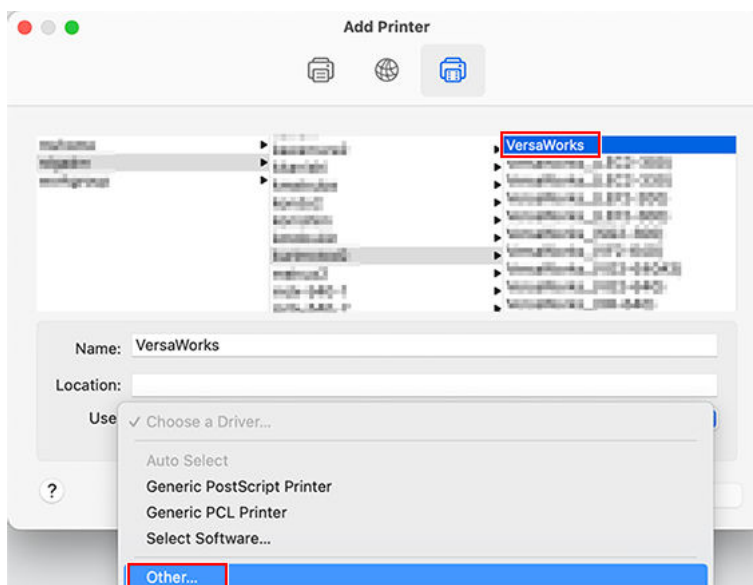
**5. Enter the name and password.**

- (1) Enter the RIP server name and password.
- (2) Click [Connect].



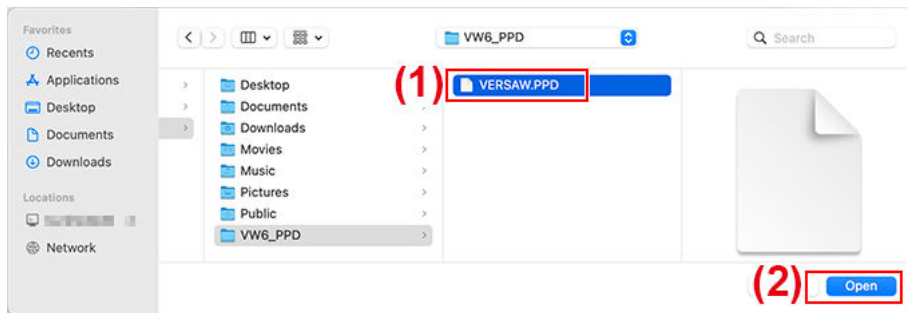
**6. Select VersaWorks as the printer to output to.**

- (1) From the list, select the virtual driver [VersaWorks\_\*\*] for the printer on which you want to print.
- (2) Select [Others] for [Driver].

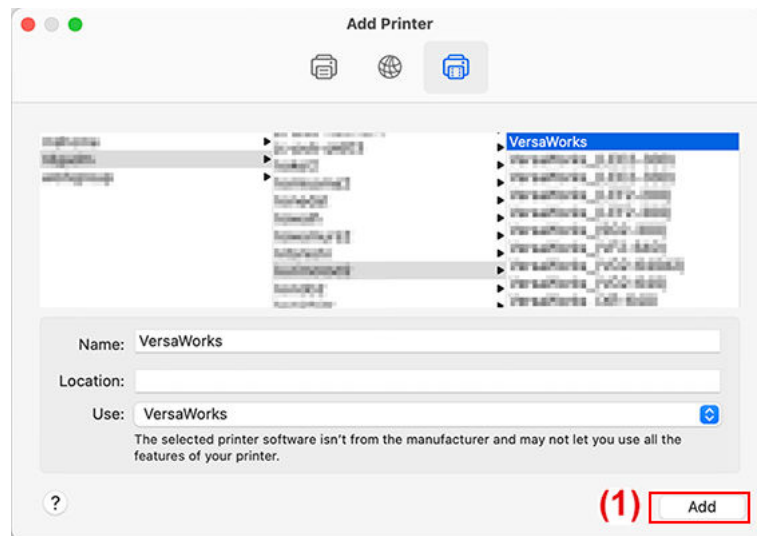


### 7. Set the PPD file on the client PC.

- (1) Select the file "VERSAW.PPD" that you saved in step 1-(4).
- (2) Click [Open].



### 8. Click [Addition].



This completes the settings for the client. You can perform output from the program in the same way as with other printers.

# Basic Operations

---

Starting VersaWorks .....	28
Starting Method .....	28
Saving VersaWorks Settings and Jobs for Later Use .....	29
Saving Backup Data .....	29
Loading Backup Data .....	30
Deleting VersaWorks.....	31
Deletion Method.....	31

# Starting VersaWorks

---

## Starting Method

### Windows 11

---

#### Procedure

1. Click [Start]>[All Apps].  
The list of apps (programs) is displayed.
2. Click [VersaWorks]>[VersaWorks].

### Windows 10

---

#### Procedure

1. Click [Start].  
The list of apps (programs) is displayed.
2. Click [VersaWorks]>[VersaWorks].

# Saving VersaWorks Settings and Jobs for Later Use

Various VersaWorks settings can be restored from backup data when changing or adding PCs. The following data can be backed up.

- Preferences
- Printer Status
- Jobs (Job information used in VersaWorks)
- Important files (User-defined spot colors, special colors, and media; printing settings files; color-matching data; Nearest Color Finder; etc.)

## IMPORTANT

- Original job data (PDF files, EPS files) should be backed up separately.
- Backup data cannot be imported if the VersaWorks version is older than the version used to create the backup data.

## Saving Backup Data

This section explains how to save VersaWorks settings and job backup data.

### Procedure

1. In an arbitrary location, create a folder where the backup data should be stored.  
Make sure the folder is empty.
2. Exit VersaWorks.
3. Start the VersaWorks [Initialize Application] tool.
  - Windows 11: Click [Start]>[All apps], and then click [VersaWorks]>[Initialize Application].
  - Windows 10: Click [Start], and then click [VersaWorks]>[Initialize Application].
4. Click [Back Up].
5. Click [...], specify the folder created in step 1, and then click [Back Up].
6. Click [Yes].  
The backup data will be saved in the specified folder.
7. When a completion message appears, click [OK].
8. Click [Close].

## Loading Backup Data

This section explains how to load saved backup data.

### Procedure

1. Exit VersaWorks.
2. Start the VersaWorks [Initialize Application] tool.
  - Windows 11: Click [Start]>[All apps], and then click [VersaWorks]>[Initialize Application].
  - Windows 10: Click [Start], and then click [VersaWorks]>[Initialize Application].
3. Click [Restore].
4. Select the folder in which the backup data was saved, and then click [Restore].
5. Click [Yes].

The backup data will be loaded.
6. When a completion message appears, click [OK].
7. Click [Close].

# Deleting VersaWorks

## Deletion Method

### IMPORTANT

Perform operations according to the procedure shown below.

Delete all the target programs by following the procedure exactly. If you do not delete all the programs as shown in the procedure, it will not be possible to fully delete some programs, and the reinstallation of these programs will fail.

## 1. Deleting VersaWorks

### Procedure

1. Log on to Windows with the account with "Administrators" rights that was used to install the software.

### MEMO

Only the account with "Administrators" rights that was used to install this software can uninstall it.

2. Shut down all programs that are running.
3. Display the window for uninstalling programs.
  - Windows 11
    - a. Click [Start]>[All Apps]>[Windows Tools].
    - b. Double-click [Control Panel].
    - c. Click [Uninstall a program].
  - Windows 10
    - a. Click [Start]>[Windows System]>[Control Panel].
    - b. Click [Uninstall a program].
4. Select [VersaWorks], and then click [Uninstall].
5. When the message [Are you sure you want to uninstall VersaWorks?] appears, click [Yes].  
When the [User Account Control] window appears, click [Yes] (or [Allow]).
6. If you're prompted to restart, click [Yes] and restart the computer.



## 2. Delete "VersaWorks Profile Package."

---

### Procedure

1. After the computer restarts, log on with an account with "Administrators" rights.
2. Shut down all programs that are running.
3. Display the window for uninstalling programs.
  - Windows 11
    - a. Click [Start]>[All Apps]>[Windows Tools].
    - b. Double-click [Control Panel].
    - c. Click [Uninstall a program].
  - Windows 10
    - a. Click [Start]>[Windows System]>[Control Panel].
    - b. Click [Uninstall a program].
4. Select "VersaWorks Profile Package," and then click [Uninstall].
5. When the message [Do you want to completely remove the selected application and all of its features?] appears, click [Yes].  
When the [User Account Control] window appears, click [Yes] (or [Allow]).
6. When a window notifying you that the uninstallation is complete is displayed, click [Finish].
7. Check that the two folders shown below have been deleted.
  - The "VersaWorks" folder in the "Program Files" folder on the "C drive."
  - The "VersaWorks" folder in the "Roland DG VersaWorks" folder in the "ProgramData" folder on the "C drive."

\* The "C drive" is the local drive (also known as the local disk) on the computer on which VersaWorks was installed. In most cases, this is the "C drive" or the "D drive."
8. If the folders listed above have not been deleted, follow the procedure shown below to delete them. It is not acceptable for even one of these folders to remain. Delete both of them.
  - (1) Right-click the "VersaWorks" folder, and then select [Delete].
  - (2) When the message [Are you sure you want to move this folder to the Recycle Bin?] is displayed, click [Yes].  
When the [User Account Control] window appears, click [Yes] (or [Allow]).

### 3. Delete the VersaWorks driver.

---

#### Procedure

1. Display the installed printers.
  - Windows 11
    - a. Click [Start]>[All Apps]>[Windows Tools].
    - b. Double-click [Control Panel].
    - c. Click [View devices and printers].
  - Windows 10
    - a. Click [Start]>[Windows System]>[Control Panel].
    - b. Click [View devices and printers].
2. Right-click [VersaWorks], and then click [Remove device].
3. If you're prompted to confirm deletion, click [Yes].  
If multiple printers are connected, repeat steps 2 and 3 to delete the printers.
4. With other printers (devices) that exist in the list selected, click [Print server properties].  
When the [User Account Control] window appears, click [Yes] (or [Allow]).
5. Click the [Driver] tab.  
If the [Change Driver Settings] button appears, click it.
6. Select [VersaWorks], and then click [Delete].
7. Select [Remove driver and driver package], and then click [OK].
8. If you're prompted to confirm deletion, click [Yes].
9. When the driver package information has been collected, click [Delete].
10. When the driver package has been deleted, click [OK].

This completes the procedure to delete VersaWorks.

