

Thank you very much for purchasing this product.

There are two workflows for each type of resin: the Denture Base workflow in which the resin is polymerized before the denture base is milled and the artificial teeth are affixed and the Removable Denture workflow in which the mold for the artificial teeth is milled and arranged and the resin is polymerized before the complete denture (full denture) is milled. Use this product as shown below to match the resin used and the work method.

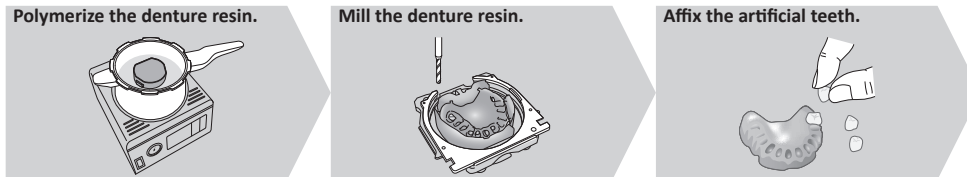
For details on the work methods, see the User's Manual, which can be viewed and downloaded from the following URL.

Cold-cured resin

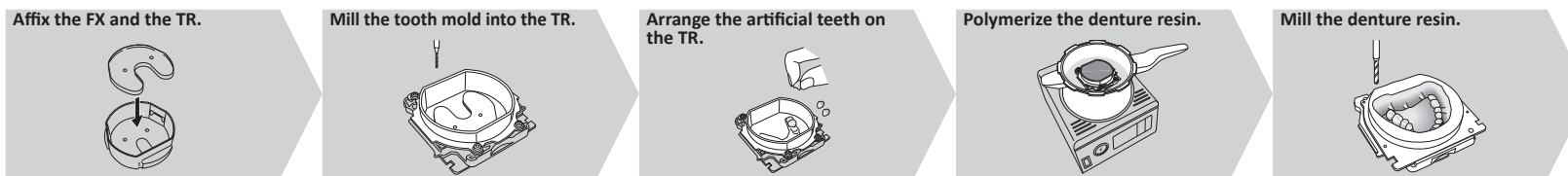
<https://downloadcenter.rolanddg.com/DK2-53>



- **Denture Base workflow: The resin is polymerized before the denture base is milled and the artificial teeth are affixed.**



- **Removable Denture workflow: The mold for the artificial teeth is milled and arranged and the resin is polymerized before the complete denture (full denture) is milled.**



Heat-cured resin

- **Denture Base workflow: The resin is polymerized before the denture base is milled and the artificial teeth are affixed.**



- **Removable Denture workflow: The mold for the artificial teeth is milled and arranged and the resin is polymerized before the complete denture (full denture) is milled.**

